



* * * ANNOUNCEMENTS * * *

NATURE: STAYING TUNED VERSUS TUNING-OUT

Amidst the disarray and discomfort caused by the coronavirus, we hope you're able to continue to explore nature in some manner. Whether it's by learning more about your backyard and neighborhood trees, insects, and birds; trying out new pollinator-attracting plants in the garden; exploring an outdoor trail you've never noticed before; or taking advantage of on-line learning and an endless array of excellent web-sites, we'd like to think that love of nature and the outdoors are providing our members some emotional solace.

To that end, we have a few field trip offerings and one on-line program this month, and the final section of the newsletter highlights some web-sites that you might like to check out when you need to spend times indoors. (We would normally say "because of rain," but this summer it's more likely the extreme heat keeping us house-bound for part of each day.)

Have you found a little-known but particularly fascinating and not-too-complicated web-site or short video that you think other WRNC members might enjoy? Send along your recommendation to warernatureclub@yahoo.com. We'll choose some links and share them in the next newsletter.

CONTRIBUTING NATURE ARTICLES, ARTWORK & PHOTOS

Perhaps the changes in your usual schedule have led you in a more creative direction these past few months. Two excellent local publications are always looking for submissions to their journals. *Bird Observer: The Birding Journal for New England* and *Massachusetts Butterflies* are interested in seeing what you might have to offer.

Bird Observer welcomes the submission of manuscripts, artwork, or photographs for consideration for publication. Articles generally fit into the categories of feature articles of scientific, technical, or general nature (more than two pages), articles on birding locations (both one-page articles and more substantial articles with full page maps), and Field Notes (one or two pages).

<https://www.birdobserver.org/Contact-Us/Submission-Guidelines>

Massachusetts Butterflies will consider publishing detailed butterfly observations or life history notes, essays, butterfly-finding locations, poetry, photographs, and original art-work. Contact editor Bill Benner at bill@massbutterflies.org with your ideas or submissions.

* * *

UPCOMING EVENTS

* * *

PRINCETON HIKES!

CENTRAL PRINCETON TRAILS

Saturday August 8th 9 a.m.

This will be a NEW hike in Princeton. The plan is to go over two new trails and one old standard. The distance is just about 4 miles and the hike is rated as moderate due to elevation changes and rough trails.

The hike will start at Princeton Center and descend on the Gregory Trail off Prospect Street. From there we will take a new trail which leads to the Princeton Land Trust (PLT) Bullock Field. We will then go over to the Peabody-Metcalf PLT trails and the pretty beaver pond before returning via the Gregory Trail.

There is some brief road walking to get between these three areas. Several of the trails are a bit rough and they are narrow trails.

Dogs ARE permitted on short leash.

Registration is REQUIRED. Please contact trailaroundprincetonma@gmail.com if you plan to join, and also if you change your mind!

A plan for the next four hikes is shown below. Registration for the future hikes will not be opened until the week before each hike.



PRINCETON HIKES! AUG-SEP 2020

Presented by the Princeton Open Space Committee

Watch eMail/Facebook for last minute changes

Saturday Hikes (9AM Saturdays)

Aug 8: Central Princeton Trails. 4 miles, Easy-Moderate. Meet at Princeton Center and Hike down through Land Trust Gregory Trail, then out to Bullock Ave and over to PLT Peabody loop. Return up Gregory Trail. **New**

Aug 22: High Ridge Loop (Westminster). 3.5 miles, Easy-Moderate. Meet at the end of Overlook Rd in Westminster. Loop through fields and forests.

Sep 12: Calamint Hill Conservation Area. 3.5 Miles, Moderate. Meet on Calamint Hill Rd North and hike all trails around two Beaver Ponds. **New**

Sep 26: Wachusett Reservoir South. 4.5 miles, Easy-Moderate. Off Rte 140 in West Boylston. Hike along the reservoir out to Rte 12 and back.

Senior Hikes (2PM Mondays)– Presented by the Princeton COA

August 17: Ski Area t Redemption Rock. 3.5 miles, Moderate. Meet at Wachusett Ski Area. Hike out to Redemption Rock and back.

September 21: Wachusett Meadow South Side. 3 miles, Easy. Meet at the end of Goodnow Road.

Registration is required for all hikes.

COVID rules require masks at all stops, plus six feet of distancing!!

Check out the progress of trails in the Calamint Hill area on September 12!!



Check our Facebook page (Trail Around Princeton). Join the mailing list for detail information on hikes. Most hikes documented on Princeton Open Space Website

Contact or register: TrailAroundPrincetonMA@gmail.com or Call Rick at 978-660-8664.

MASSACHUSETTS BUTTERFLY CLUB

**BUTTERFLY WALK AT HIGH RIDGE
WILDLIFE MANAGEMENT AREA
WESTMINSTER**

Sunday, August 9th 10:30 a.m. – 2:30 p.m.



On this property, MassWildlife has adopted a management plan that delays mowing of open fields and grasslands until August 15th. This WMA holds many other types of habitat, in addition to its many fields. It will be interesting to see what kinds of butterflies are using the area since the new mowing regime began in 2018. Parking lot is at the (gated) end of Overlook Road, which is off Bacon Street in Westminster. Bring snacks/lunch/beverage. There are places to get out of the sun but no rest rooms. Contact leader Wendy Howes at warerivernatureclub@yahoo.com ahead of time to indicate interest. Guidelines here: <https://www.naba.org/chapters/nabambc/field-trips.asp>

WARE RIVER NATURE CLUB

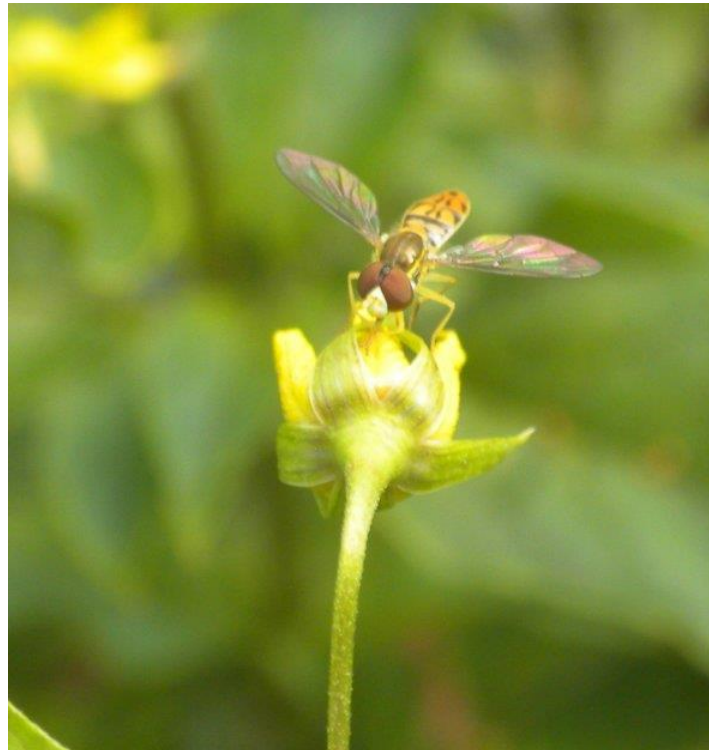
ZOOM MEETING

EXPLORING NATURE WITH

iNATURALIST

presented by Lynn Harper

Wednesday August 12th 7 p.m.



Lynn Harper, Habitat Protection Specialist with the Natural Heritage & Endangered Species Program at MassWildlife, will introduce iNaturalist, an online community of naturalists worldwide. iNaturalist can track your observations of any species, help you identify plants and animals you don't know, and let you see what other naturalists are finding. It's fun and it's free.

This will be a meeting in two parts, each 30-35 minutes in length. Lynn will first present a PowerPoint talk; after a short break, we'll resume with all attendees "present" and the ability to interact.

Please send a message to warivernatureclub@yahoo.com with NATURE ZOOM in the subject line if you would like to receive an invitation and link to this meeting.

Ware River Nature Club



BOBOLINKS, BUTTERFLIES, AND BATS AT MOORE STATE PARK, PAXTON

**Wednesday August 19th
8:30 - 11:30 a.m.**

Leaders: Wendy Howes
& Bill Platenik

Join us for a walk here as we look in a large, unmowed field for flocking Bobolink families and other birds, as well as butterflies and pollinating insects. Many pairs of Bobolinks have nested successfully here since the mowing guidelines were altered to mandate late-season cutting. We should have a chance to observe different ages and plumages. We'll also explore a couple of other trails at the Park to watch for other birds and visit the bat building area. We hope to have information about the status of the bat population here, which plummeted from around 600-900+ in the 90s and until 2008, then fell to about 240 individuals in 2011, following the high mortality caused by white-nose syndrome.

Number of participants is limited,
and recommended public health guidelines will be followed.

Please pre-register at warerivernatureclub@yahoo.com by Monday, August 17th.

Walk will be re-scheduled in the event of rain.

MASSACHUSETTS BUTTERFLY CLUB

**BUTTERFLY WALK AT
WENDEMUTH MEADOW PRESERVE
NORTH BROOKFIELD**

Saturday, August 22nd 10:00 a.m. – 2:30 p.m.



Owned and managed by the East Quabbin Land Trust, Wendemuth Meadow Preserve is a 30-acre property. The Preserve features a diversity of habitats including hayfield, wet meadow, and stream surrounded by patchy woods and shrubland. The property is actively farmed and hay is harvested in July after Bobolinks and other birds have completed their nesting cycle. Baltimore Checkerspots usually put on a good show here. Parking is along Bates Street, where the entrance is located. No restrooms on-site. Bring beverage/snacks/lunch, and we'll take a lunch break in the barn. Please contact leader Wendy Howes at warerivernatureclub@yahoo.com to indicate interest.

Guidelines: <https://www.naba.org/chapters/nabambc/field-trips.asp>

WARE RIVER NATURE CLUB

NIGHTHAWK WATCH HARDWICK

Tuesday August 25th 6 p.m. -sunset



Pack up a portable chair, binoculars, beverage/snack, and maybe some insect repellent (although we shouldn't be bothered by biting insects before sunset) and join us to watch for migrating nighthawks. These graceful aerial insectivores feed on emerging flying ants and other insects as they make their way south.

They're generally observed on warm evenings along waterways.

We'll choose a viewing location that is open, somewhat higher than surrounding landscape, and able to accommodate social distancing.

Contact warerivernatureclub@yahoo.com to indicate interest. Meeting place will be Hardwick Center Common, and we'll drive from there.

We'll reschedule if it rains or conditions are unfavorable.

MASS AUDUBON

CENTRAL MASSACHUSETTS AREA

UPCOMING PROGRAMS & WALKS in AUGUST

<https://www.massaudubon.org/program-catalog/results/central-mass/adults/exclude-camps-and-vacation-weeks>

"After closing our sanctuaries in late March to help stop the spread of COVID-19, we are now happy to share that, after careful analysis and discussions with local officials, we've been able to safely open the trails at all of our wildlife sanctuaries for local visitation."

- **All buildings & most facilities remain closed** (no water fountains available)
- **Bathrooms are closed** at all sanctuaries **except** Drumlin Farm, Long Pasture, Wachusett Meadow, & Wellfleet Bay
- All visitors should follow [trail safety guidelines](#); dogs & bikes are *not* permitted; carry out anything you bring in

Welcome!



TO KEEP OUR TRAILS OPEN AND FOR YOUR SAFETY AND SAFETY OF OTHERS PLEASE:

Wear a mask or face covering 	Do not use nature play areas, benches, or other high-touch surfaces 
Stay at least 6 feet from other visitors & step aside to allow others to pass 	Choose the least crowded trail 
REMEMBER:	
Take a photo of the map (or download it from massaudubon.org/trails) 	Bathrooms and other facilities are closed 
Anything you carry in, carry out 	No dogs & no bikes  

STAY LOCAL * STAY SAFE * STAY HEALTHY
Help keep our sanctuaries protected. Text TRAILFUND to 44-321 to donate.

MASS AUDUBON NATURE SANCTUARIES

[Broad Meadow Brook](#), Worcester → [trail map](#)

[Burncoat Pond](#), Spencer → [trail map](#)

[Cook's Canyon](#), Barre → [trail map](#)

[Eagle Lake](#), Holden → [trail map](#)

[Flat Rock](#), Fitchburg → [trail map](#)

[Lake Wampanoag](#), Gardner → [trail map](#)

[Lincoln Woods](#), Leominster → [trail map](#)

[Nashoba Brook](#), Westford → [trail maps](#)

[Pierpont Meadow](#), Dudley → [trail map](#)

[Poor Farm Hill](#), New Salem → [trail map](#)

[Rocky Hill](#), Groton → [trail map](#)

[Rutland Brook](#), Petersham → [trail map](#)

[Wachusett Meadow](#), Princeton → [trail map](#)



THE TRUSTEES

CENTRAL MASSACHUSETTS PROPERTIES

When enjoying these newly reopened properties (below), The Trustees asks that visitors follow these social distancing guidelines for the health and safety of all, and to help keep properties open in these challenging times:

- Limit visits to open Trustees properties in your respective town or neighborhood;
- Stay at least six feet from other visitors, including stepping aside on the trail to let others pass;
- Please keep dogs leashed and away from other visitors at all times;
- If a parking area is full, please come back at a less busy time.

[Bear's Den](#), New Salem

[Brooks Woodland Preserve](#), Petersham

[Elliott Laurel](#), Phillipston

[Jacobs Hill](#), Royalston

[North Common Meadow](#), Petersham

[Redemption Rock](#), Princeton

[Rock House Reservation](#), West Brookfield

[Royalston Falls](#), Royalston

[Swift River Reservation](#), Petersham

MASSACHUSETTS STATE PARKS/ DEPT. of CONSERVATION & RECREATION

Massachusetts state parks and other natural resources managed by DCR remain open and accessible to the public.

<https://www.mass.gov/info-details/massachusetts-state-parks-covid-19-update>

MASS WILDLIFE

Wildlife Management Areas are open, fishing is open, and trout stocking will continue. <https://www.mass.gov/news/masswildlife-covid-19-response>

WEB PAGES WORTH A LOOK

Athol Bird & Nature Club

INTRODUCTION TO BUTTERFLY WATCHING

[The PowerPoint PDF can be viewed here](#)

CATS INDOORS INITIATIVE

<https://abcbirds.org/catio-solutions-cats/>

BIRD-FINDING IN MASSACHUSETTS WITH GPS COORDINATES

This website identifies the GPS coordinates for all the locations identified in the two major birding guides to Massachusetts—BIRDERS GUIDE TO EASTERN MASSACHUSETTS and BIRDERS GUIDE TO WESTERN MASSACHUSETTS. This makes it possible to download the coordinates to a personal GPS or to view the locations in Google Earth. An individual without a GPS can get detailed driving directions to any of these sites from Google Earth or maps to these locations on their cell phone using Google Mobile.

<https://sites.google.com/site/birdingtrails/statetrail2>

NATURALIST TOM MURRAY'S PHOTO GALLERIES

Use these beautiful photo albums by Tom Murray for field identification help, or as "eye candy."

<https://pbase.com/tmurray74/mammals>

<https://pbase.com/tmurray74/frogs>

MOTH PHOTOGRAPHERS GROUP--GETTING STARTED WITH MOTHS

<http://mothphotographersgroup.msstate.edu/WalkThroughIndex.shtml>

SAMPLE SONGS OF CRICKETS AND KATYDIDS

<https://orthsoc.org/sina/a00samples.htm>

KILL YOUR LAWN

Turf grasses need extra water, polluting fertilizers, and carcinogenic herbicides and pesticides. These boost growth, so we mow more often, trailing gas fumes that create ozone pollution. Enough! See how to replace your fossil-fueled turf with a gorgeous, low-maintenance landscape of native plants.

<http://www.nativeplanttrust.org/for-your-garden/ecological-gardening/>