



May 2023

**\* \* \* ANNOUNCEMENTS \* \* \***

**WARE RIVER NATURE CLUB : TEN YEARS !**

Occasionally we're asked about the number of members in the Club. It's difficult to provide a precise number. But we can say that, although it was expected that membership numbers would increase over the years, the number of active members actually has been and remains a "moving target" of 35-45 households. The number fluctuates because it's not our style to send out a lot of reminders about dues, and members come and go for a variety of reasons. But of course we'd like to grow and be able to take on more conservation projects, so new members are always welcome: <http://www.warerivernatureclub.org/join-us.html>

If you've already joined, thank you very much! Please drop us a line at [warerivernatureclub@yahoo.com](mailto:warerivernatureclub@yahoo.com) telling us how we can enhance your enjoyment and experience of local nature, or letting us know what you like, or don't like.

Our core operations are handled by a coordinator (Wendy Howes) and Treasurer (Karl Barry) and a five-member Advisory Group; currently the group has four members, and we're seeking to fill the vacancy. Please contact us if you think this is something you'd like to do.

We are financially secure for a small Club, and that is thanks to those of you who donate extra every year. You know who you are! We are very grateful to all who help keep us afloat and enable us to offer high-quality educational programs and field trips as well as contribute to various conservation efforts.

As Ware River Nature Club continues the journey of appreciation of the nature of central Massachusetts, we hope you'll join us!



# UPCOMING EVENTS



## ATHOL BIRD & NATURE CLUB



*Yellow Warbler*

*Photo by Alan Rawle*

# EARLY BIRD BIRDING

with Jeff Johnstone

Fridays:

May 5th, 12th, 19th, 26th  
7:00 a. m.

Meet up with Jeff at Millers River Environmental Center, 100 Main Street, Athol before heading out to explore the North Quabbin area for spring migrant birds. These are great opportunities for the novice birder to learn from one of our best field naturalists. Come for as long as your schedule allows. Severe weather cancels.

For information, contact Jeff at 978-249-9052.



*Chestnut-sided Warbler*

*Photo by Anne Greene*

ZOOM Program—  
OAKS AND WASPS:  
SHAPING NOVEL  
ORGANS IN THE  
SEASONAL ROUND  
with Adam Kranz



*Photo by Tom Murray on BugGuide*

Wednesday May 10<sup>th</sup> 7 p.m.

Millers River Environmental Center, 100 Main Street, Athol

Oak gall wasps take advantage of the annual flow of resources throughout an oak tree to produce beautiful and distinctive novel plant organs to feed and protect them. With an estimated 1000 species in North America, each producing two different galls per year, this symbiosis is one of the most engrossing puzzles in nature. Adam would like to equip us to help him put it together.

Adam Kranz is one of the co-founders of [www.Gallformers.org](http://www.Gallformers.org), an online database for amateur and academic naturalists studying plant galls in North America. He lives in Austin, Texas.

Join us in person at Millers River Environmental Center, 100 Main Street, Athol to watch the Zoom presentation together OR view from your own remote location.

Register [HERE](#)

PRINCETON OPEN SPACE COMMITTEE - PRINCETON HIKES!

## WACHUSETT MOUNTAIN SUMMIT HIKE

Saturday May 13<sup>th</sup> 9 a.m.



This moderate-to-difficult rated hike of 4.5 miles will take us up past Echo Pond to High Meadow and to the summit, then down Mountain House to the Mountainside Café. We're hoping to enjoy the wildflowers in the high meadow during this hike!

For more information or to register: [TrailaroundprincetonMA@gmail.com](mailto:TrailaroundprincetonMA@gmail.com)



*Song Sparrow*

*Photo by Doug Wipf*

**ATHOL BIRD & NATURE CLUB**



*American Redstart*

*Photo by Alan Rawle*

**SPRING BIRD  
WALK  
HIGH RIDGE  
WILDLIFE  
MANAGEMENT  
AREA  
GARDNER  
with Jon Skinner  
Sunday  
May 14<sup>th</sup> 7 a.m.**

High Ridge Wildlife Management Area is 1040 acres of meadows, grasslands, forests and wetlands that make great habitats for migrating warblers, ducks, herons, rails and other locally breeding birds. We'll walk about 3 miles on dirt paths and once-paved roads with a few hills of about 50 feet of elevation difference. Bring water and snacks if you wish. No restrooms.

Meet at the dirt parking lot of the Smith Street entrance, which can be found off Rt 140 in Gardner, half a mile south of the 101/140 intersection. Google Maps link:

<https://goo.gl/maps/B6CV8LAaTX5Hjg6MA>

(42.585943, -71.953457)

Registration is advised in case of inclement weather:

[jon@jonrisk.com](mailto:jon@jonrisk.com) or via text/call at 978-894-3698.

FORBUSH BIRD CLUB

# BIRDING QUABBIN GATE 45

## HARDWICK

Thursday May 18<sup>th</sup> 8 a.m.

Leader: Wendy Howes



*Eastern Towhee*

*Photo by Ted Purcell*

This walk is timed to coincide with a period of high activity -- the ongoing passage of neotropical migrants as well as the onset of nesting season by other species. The trails will take us through a variety of habitats and some beaver-managed wetlands. We should encounter a variety of warblers, especially Chestnut-sided and Pine; vireos, including Yellow-throated; Eastern Towhee, Wood Duck, and more. Dress for the weather, expect ticks, and plan to walk about 3 miles, most of it on old roadways but one along a grassy path.

To register: [waverivernatureclub@yahoo.com](mailto:waverivernatureclub@yahoo.com)

FORBUSH BIRD CLUB

BIRDING AT  
MUDDY BROOK  
WILDLIFE  
MANAGEMENT  
AREA  
HARDWICK  
Sunday May 21<sup>st</sup>  
7:30 a.m.  
Leader: Wendy Howes



*Prairie Warbler*

*Photo by Alan Rawle*

This Wildlife Management Area is a work-in-progress as part of a large oak-pine restoration effort by Mass Wildlife. Besides passage migrants that may still be moving through the region and common nesting species such as Yellow-bellied Sapsucker and Eastern Bluebird, we can expect to find Prairie and Blue-winged warbler, Field Sparrow, and Eastern Towhee. The marsh along the northern section of the brook holds Swamp Sparrows and possibly American Bittern. Ticks are common here.

To register and get directions: [warerivernatureclub@yahoo.com](mailto:warerivernatureclub@yahoo.com)

MASS AUDUBON

To see May programs and classes, click [HERE](#)  
All require registration and fee.



*Photo by Anne Greene*

HIKE TO  
POUTWATER  
POND

Wednesday

May 24<sup>th</sup>

10 a.m.

Starting at Esty Road,  
this is an easy-to-moderate  
3-mile hike.

HIKING HEYWOOD RESERVOIR  
& DEVIL'S PULPIT

Saturday May 27<sup>th</sup> 9 a.m.

Departing from Sholan Farms in Leominster, this moderate 5-mile hike offers scenic vistas of the Heywood Reservoir, a lovely section along Heywood Brook and a short open meadow trail section near Sholan Farms.

For more information or to register:  
[TrilaroundprincetonMA@gmail.com](mailto:TrilaroundprincetonMA@gmail.com)



WARE RIVER NATURE CLUB

SPRING  
WILDFLOWERS  
& PLANTS,  
BARRE

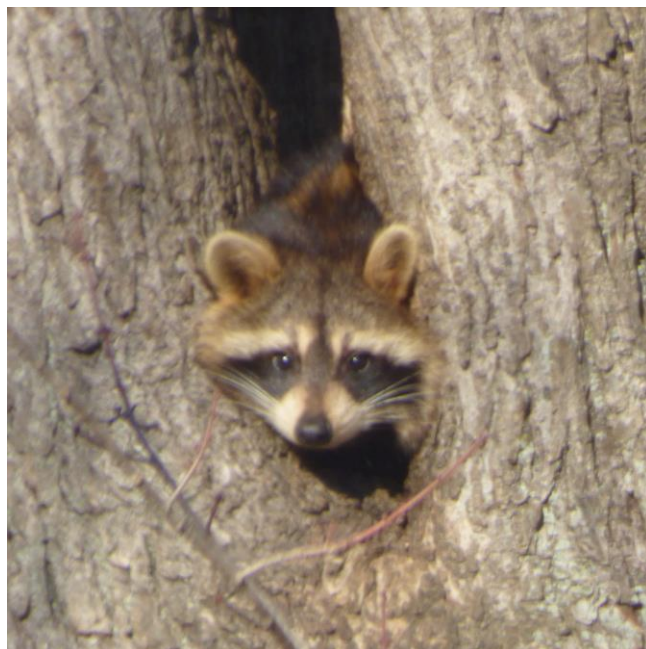
Saturday May 27<sup>th</sup>  
9 a.m. - noon



We'll visit one or more habitat types on protected land in Barre in search of emerging spring wildflowers and other woodland plants. Join us with your old-fashioned print field guides, cellphone apps, and/or cameras. Plan to dress for the weather and wear sturdy foot gear.

Please register in advance:

[warerivernatureclub@yahoo.com](mailto:warerivernatureclub@yahoo.com)



WARE RIVER NATURE CLUB

Monthly program:

**EXPLORING the DCR**

**WARE RIVER WATERSHED**

**PRISON CAMP AREA, RUTLAND**

with Ken Canfield, Chief Forester for Quabbin/Ware River Watersheds  
& Maria Beiter-Tucker

Interpretive Services, DCR Division of Water Supply and Protection

**Wednesday May 31<sup>st</sup> 5:45 p.m.**



This month's educational program takes place outdoors with guides Ken and Maria, who will share information about the land use history and management goals for this interesting

segment of watershed property. We'll learn a bit about the ecology of the wetland system, forested sections, and fields. This area is popular with hikers, birders, and others who enjoy the outdoors, and Club volunteers monitor and maintain nestboxes at the site.

Meet at the parking area on Prison Camp Road. Drive or walk to it by entering the Intervale Road access road in Rutland, crossing the Longfellow Brook bridge, and proceeding straight to the junction of Intervale Road and Prison Camp Road.

For more information: [wativerivernatureclub@yahoo.com](mailto:wativerivernatureclub@yahoo.com)