

June 2021

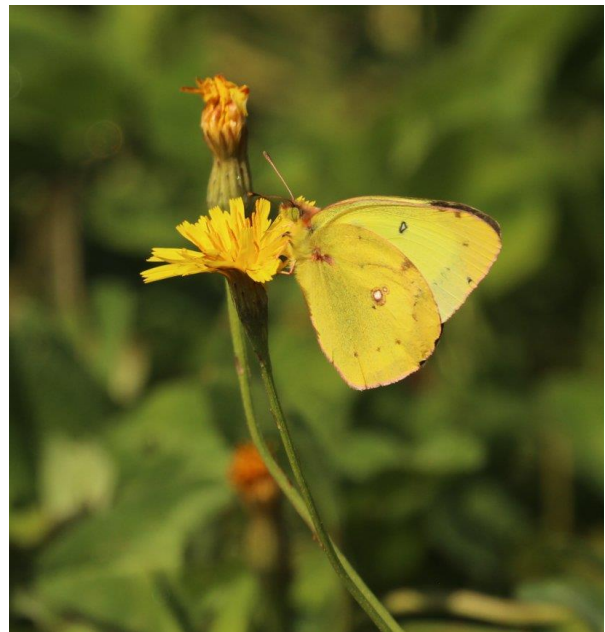


*** * * UPCOMING EVENTS * * ***

MASSACHUSETTS BUTTERFLY CLUB

**BUTTERFLY WALK
NORTH COMMON
MEADOW,
PETERSHAM**

**Sunday June 6th
10 a.m. – 2:30 p.m.**



We can expect a variety of butterflies at this Trustees of Reservations Property, although it can be hit-or-miss depending upon weather patterns. Food, including take-out, and restroom at The Petersham Country Store on Main Street. To sign up and for meeting location, contact leader Wendy Howes at warerivernatureclub@yahoo.com.

ATHOL BIRD & NATURE CLUB/NORTHFIELD BIRD CLUB

On-line Program
via Microsoft Teams—



**AN INTRODUCTION
TO OBSERVING AND
IDENTIFYING
DRAGONFLIES AND
DAMSELFLIES**

by Dave Small

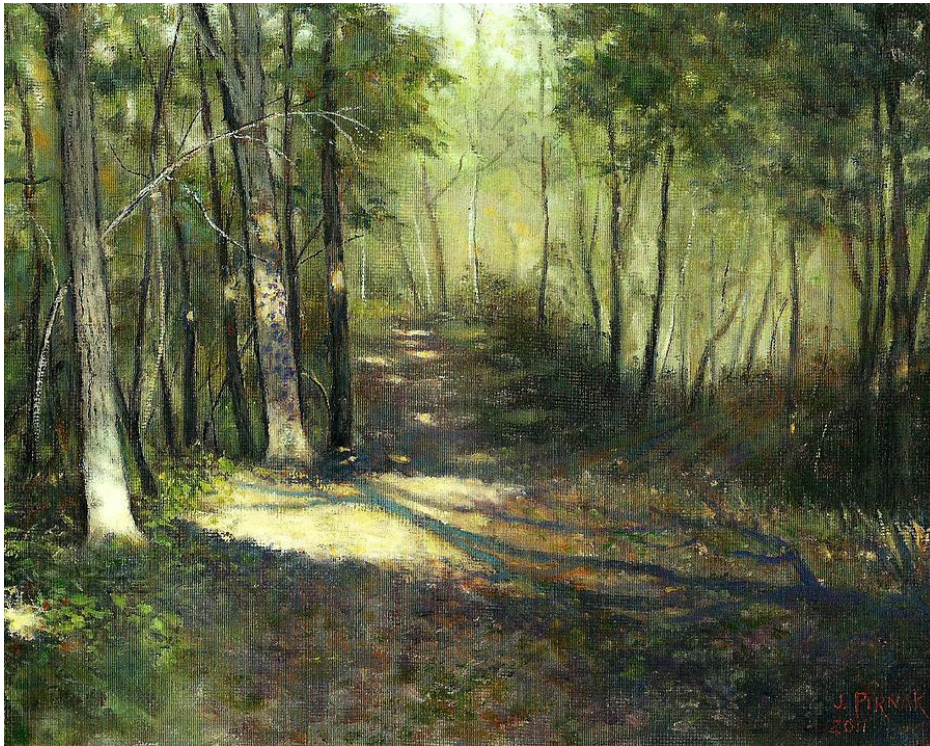
Tuesday June 8th 5:30 -6:30 p.m.

Join Athol Bird and Nature Club president Dave Small for this free presentation. This virtual program is geared for the beginner but will be a good refresher for more experienced observers. The program will begin with a discussion on the origins and life history of the Dragons and Damsels followed by a look at the families encountered in Massachusetts with some hints on where to find them. The presentation is timed to coincide with the beginning of dragonfly emergence in June. Co-sponsored by the two Clubs and Firstlight's Northfield Mountain Recreation and Environmental Center. Pre-registration is required at www.bookeo.com/northfield.

Registration requests must be received
at least 24 hours before program begins.

PRINCETON OPEN SPACE COMMITTEE
PRINCETON HIKES!

HIKE the NEW COBB BROOK TRAILS AREA
Saturday June 12th 9 a.m.



We will explore some of the spurs that have been built off this trail.
3.5 miles of easy-moderate hiking

To register for this hike, or to join the mailing list
and get early information about each hike, write to
TrailAroundPrincetonMA@GMail.com

FORBUSH BIRD CLUB

55th ANNUAL BREEDING BIRD CENSUS

Mass Audubon

Wachusett Meadow Wildlife Sanctuary

Princeton

Sunday June 13th 7 – 11:30 a.m.



A half-century of data reveals important trends in the bird population at Wachusett Meadow. Each participant/team will be assigned a section of Sanctuary trails and be responsible for identifying and tallying all the birds encountered there during the designated 3.5 to 4 -hour time period. The compilation, with refreshments, begins at approximately 10:30 a.m. Participants need not be present for the compilation.

Compilers: Wendy Howes [warerivernatureclub@yahoo.com] and Donna Schilling (978-263-9434)[dschilling15@verizon.net]. Please contact compilers in advance to confirm participation and coordinate your route assignment.

WARE RIVER NATURE CLUB

Monthly program--

ECOLOGY TOUR

WILLOW FARM, WARE

with Brian Klassanos

Wednesday June 23rd 5:30 – 7:30 p.m.



Brian and Martha Klassanos' Willow Farm property is part of the Muddy Brook Valley, a region defined by deep coarse glacial sands that underlay the area and give rise to its unique features. The fire-influenced natural communities, often referred to as barrens, that were present until modern practices resulted in forest growth, supported plant, invertebrate, and animal species that are now rare in the state.

Restoration efforts are bringing these species back.

Following in the footsteps of Mass Wildlife's barrens restoration projects, Brian launched a full-scale effort on his own property which has resulted in the presence of an ecological treasure-trove of plant and moth species. We'll take a casual tour of the property and learn about some of the characteristics of barrens communities.

Join us for our last nature education program of the season.

Register at wativernatureclub@yahoo.com

Program will be postponed in the event of inclement weather.

MASS AUDUBON

HIKE TO GEBO'S CABIN PETERSHAM

Friday June 25th

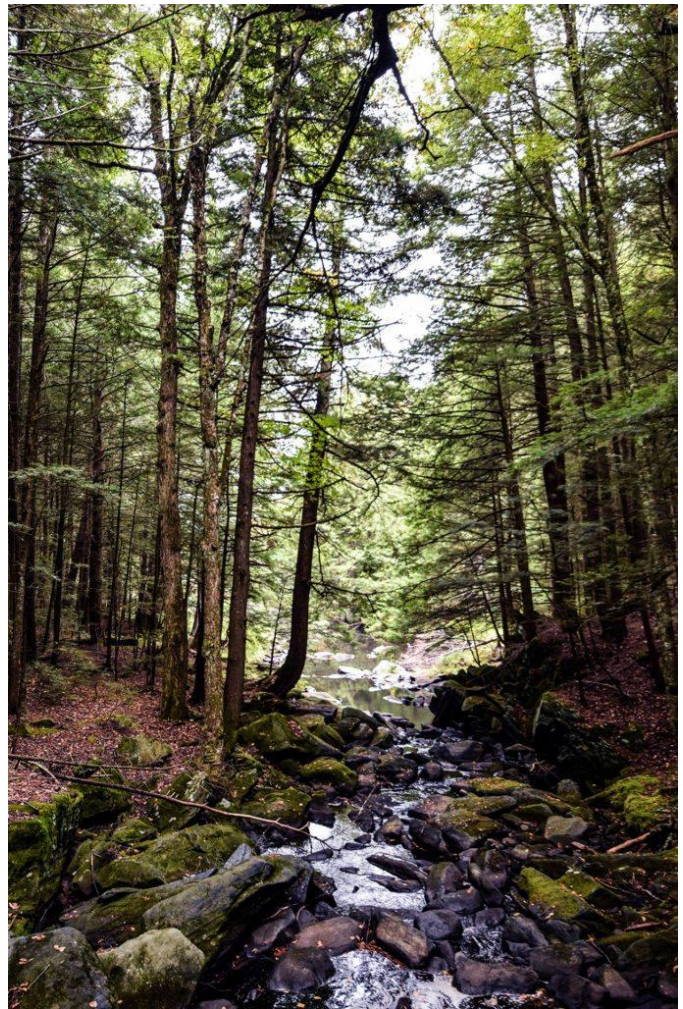
1 -3 p.m.

with Chris Eaton

Lead Educator at
Wachusett Meadow Sanctuary

Members: \$20.00

Non-members \$28.00



Experience the majestic woods along the East Branch of the Swift River as we hike to Gebo's cabin. Fred "Gebo" Brouillet was a respected Canadian laborer who came to help with the clean-up of the 1938 hurricane. He built a tiny home similar to Thoreau's at Walden Pond and Henry Beston's on the outer Cape. We'll reflect on these three men and their simpler lives and need for solitude. The hike is about a mile over moderate terrain.

Registration is required:

<https://www.massaudubon.org/program-catalog/wachusett-meadow/79050-hike-to-gebo-s-cabin>